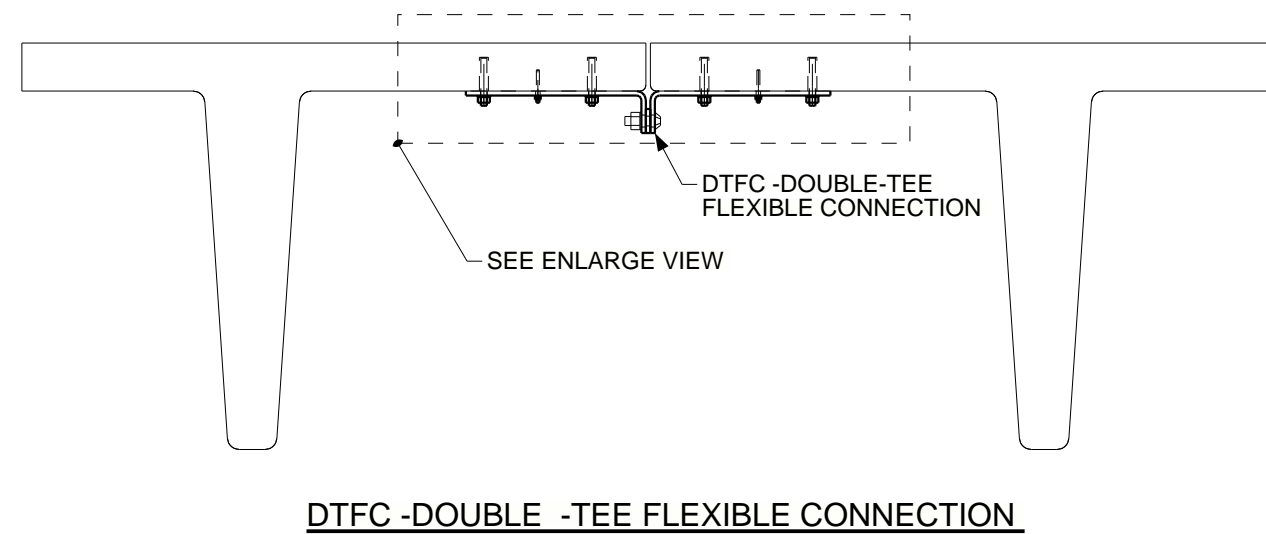


SEQUENCE OF OPERATIONS:

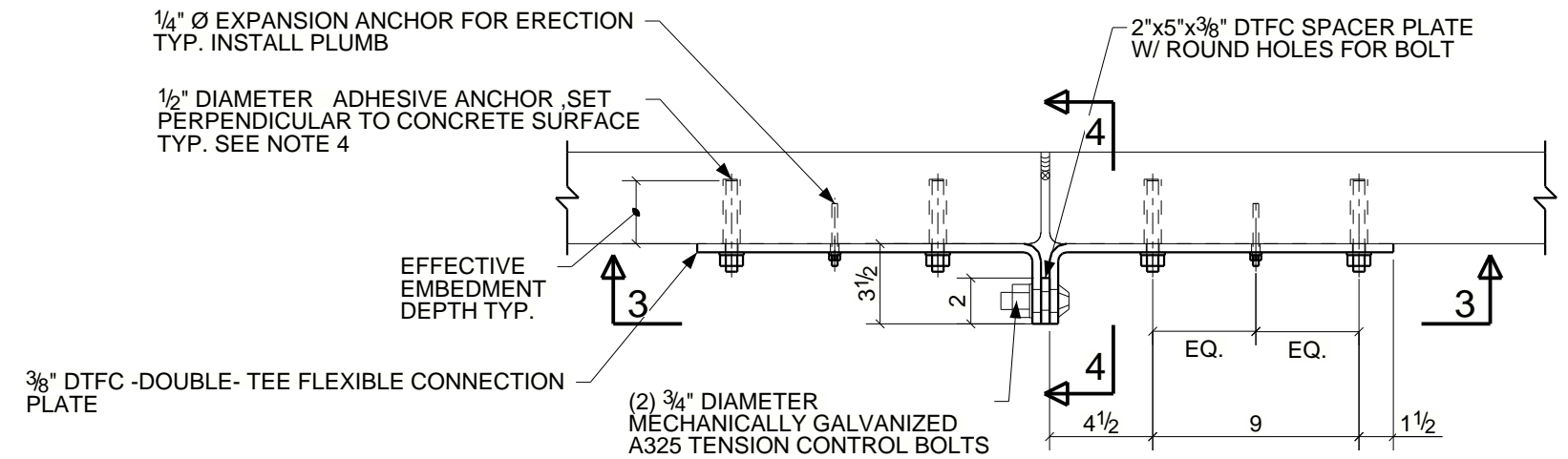
1. ASSEMBLE DTFC PLATES AND SPACER ASSEMBLY PRIOR TO INSTALLATION. HAND TIGHTEN TENSION CONTROL BOLTS. DO NOT FULLY TENSION BOLTS AT THIS TIME.
2. DRILL AND INSTALL ERECTION BOLTS. SECURE DTFC TO SOFFIT CENTERED ON JOINT AND SNUG TO SURFACE.
3. WITH DTFC IN PLACE, MARK LOCATIONS OF ADHESIVE ANCHORS. DISASSEMBLE BOLTS AND SPACER PLATE AND ROTATE DTFC PLATES 90 DEGREES. DRILL AND CLEAN HOLES. ROTATE DTFC PLATES BACK AND REASSEMBLE BOLTS AND SPACER ; HAND TIGHTEN SUCH THAT ALL PLY'S ARE IN FULL CONTACT.
4. PREPARE HOLES AND INSTALL ADHESIVE ANCHORS PER MANUFACTURER'S PRINTED INSTALLATION INSTRUCTIONS.
5. TEMPORARILY SECURE ANCHOR IN PLACE UNTIL ADHESIVE CURES.
6. TIGHTEN NUTS WITH A CALIBRATED TORQUE WRENCH TO THE MANUFACTURER'S RECOMMENDED TORQUE.
7. TIGHTEN TENSION-CONTROL BOLTS ACCORDING TO RCSC's "SPECIFICATION FOR STRUCTURAL JOINTS USING ASTM A 325 OR A 490 BOLTS.

NOTES TO DESIGNER:

1. THE EOR SHALL VERIFY SUITABILITY OF THE CONNECTION AND COMPONENTS FOR THE JOB SPECIFIC APPLICATION.
2. EXISTING SHEAR CONNECTIONS ALONG A SINGLE DOUBLE-TEE JOINT SHOULD BE REPLACED AT MINIMUM ONE FOR ONE WITH DTFC; ADDITIONAL DTFC MAY BE REQUIRED DEPENDING ON REQUIRED LOADING.
3. FOR MINIMUM 4" DEEP DOUBLE-TEE FLANGE, THE FOLLOWING ADHESIVE ANCHOR IS SUGGESTED (SUITABILITY TO BE VERIFIED BY EOR): 1/2" HILTI HAS-R 304 SS THREADED ROD SET IN HILTI HIT-HY200 ADHESIVE EFFECTIVE EMBEDMENT = MAXIMUM PER MFG. FOR CONCRETE THICKNESS.
4. FOLLOW ALL APPLICABLE LOCAL, STATE, AND FEDERAL CODES AND STANDARDS.



DTFC -DOUBLE -TEE FLEXIBLE CONNECTION

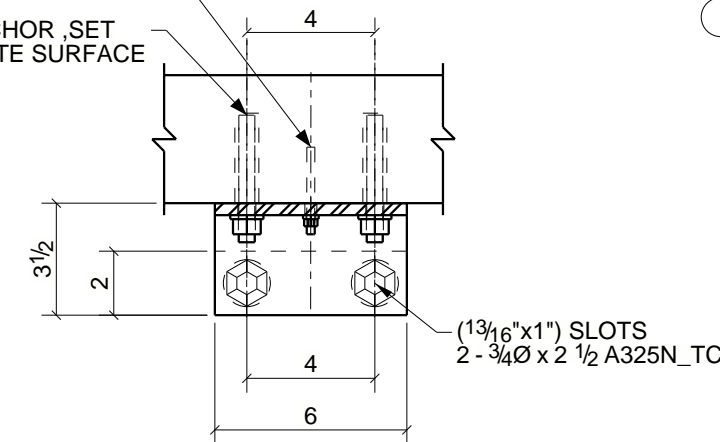


DTFC -DOUBLE -TEE FLEXIBLE CONNECTION DETAIL

ENLARGE VIEW

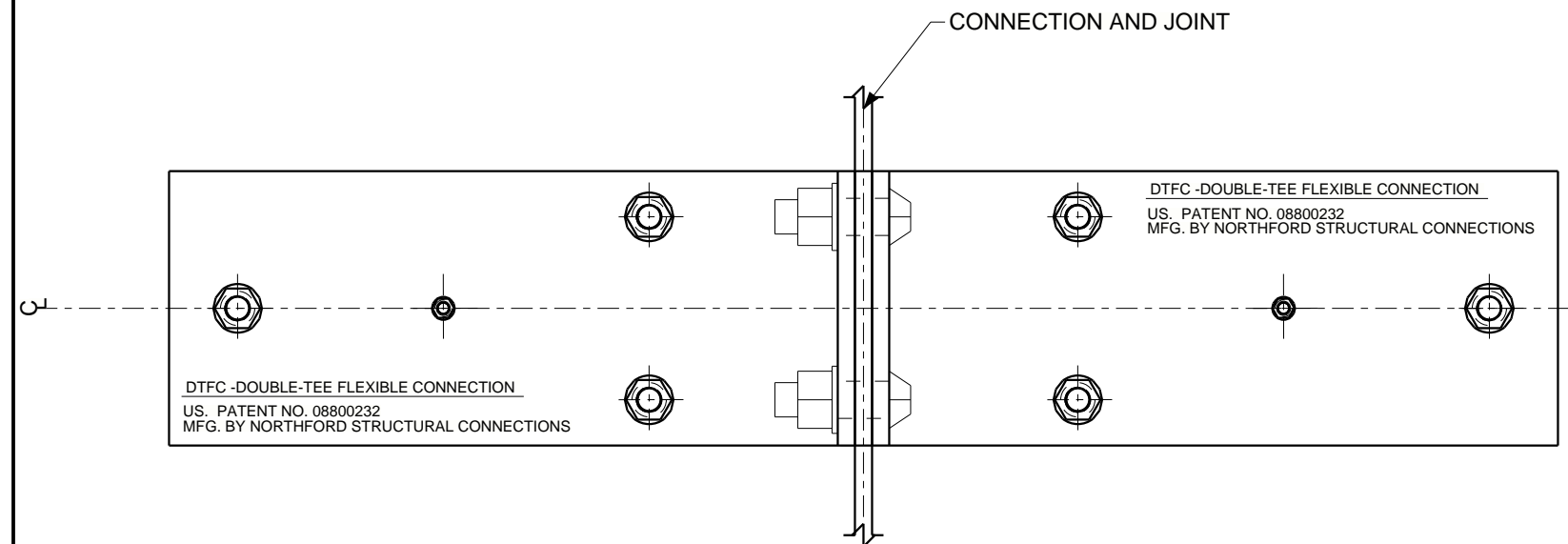
1/4" Ø EXPANSION ANCHOR FOR ERECTION
TYP. INSTALL PLUMB

1/2" DIAMETER ADHESIVE ANCHOR, SET
PERPENDICULAR TO CONCRETE SURFACE
TYP. SEE NOTE 4



DTFC -DOUBLE -TEE FLEXIBLE CONNECTION DETAIL

SECT. 4



DTFC - DOUBLE-TEE FLEXIBLE CONNECTION DETAIL

SECT. 3

REV.	DESCRIPTION	DATE	CHK
------	-------------	------	-----

DESCRIPTION DTFC INSTALLATION	DATE DRAWN 05/29/2024	DRAWN BY	CHECKED BY
NORTHFORD STRUCTURAL CONNECTIONS LLC 105 BARCLAY ST NEW HAVEN, CT 06519 203.777-0751 203.234-0031 WEB SITE https://nscclips.com/			
CONTRACTOR NORTHFORD STRUCTURAL CONNECTIONS			
PROJECT NAME DTFC	LOCATION		
DETAILING CO. NSC	ENGINEER NSC		
CHECKED BY : NSC	REF. DRG.		
JOB No. 2_06_2024	DRG No. M2	REV. 1	