



DOUBLE-TEE FLEXIBLE CONNECTION

DTFC - CHECKLIST

Name _____ Company _____ Date _____

Phone _____ Fax _____ Email _____

Job Name _____ Job Location (City & State) _____

GARAGE DESCRIPTION	Order Information
Single-Tee / Double Tee _____	Quantity of Standard DTFC _____
No. of Decks / Bays _____	Quantity of DTFC Top/Bot. of Ramp _____ / _____
Topped / Pre-topped _____	Quantity of DTFC w/ vertical offset (>3/8") _____

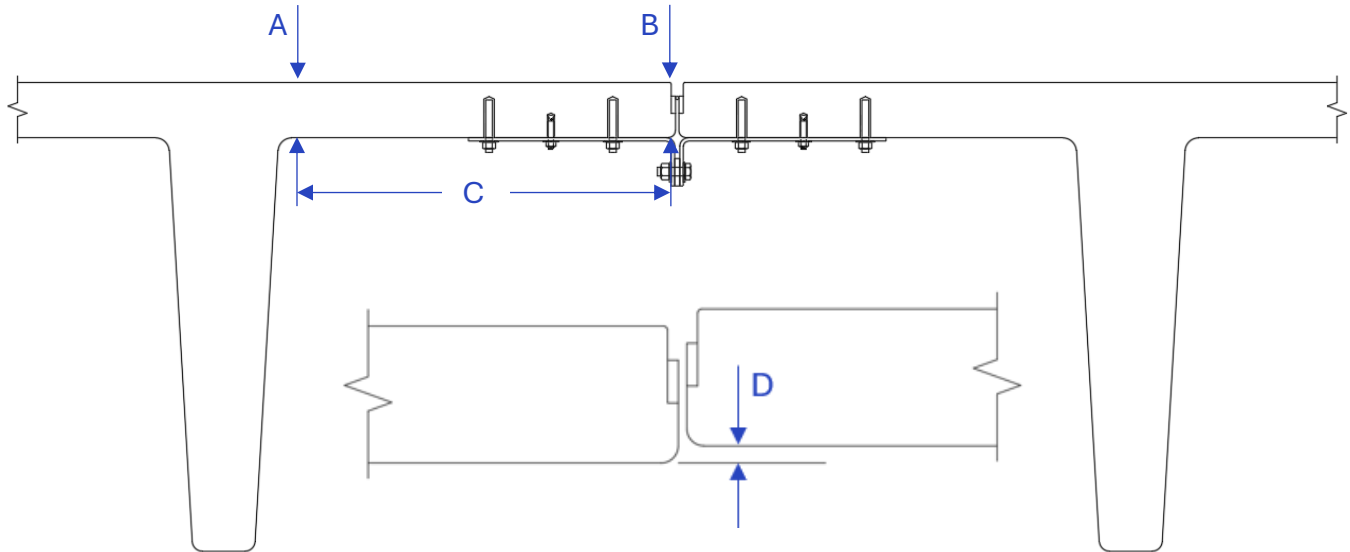
DIMENSIONS

Flange Thickness ("A" = "B") _____ (INCHES)
<or>

Flange Width ("C") _____ (INCHES)*

Tapered Flange ("A" & "B") _____ & _____ (INCHES)

**Note: Standard DTFC fits non-tapered flange. Tapered flange must be noted and may require alternate bend of DTFC Plate.*



Max Vertical Offset ("D") _____ (INCHES)*

**Note: Standard DTFC allows 3/8" vertical offset. Larger offset must be noted and may require long slotted holes or welded shim plates.*

Top of Ramp Angle ("E₁") _____ (DEGREES)

Bottom of Ramp Angle ("E₂") _____ (DEGREES)

